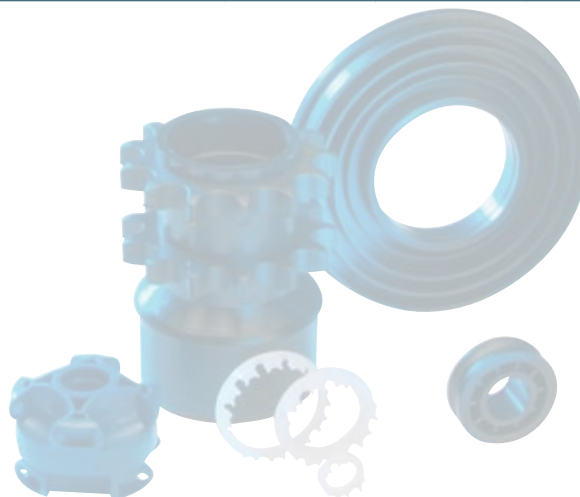


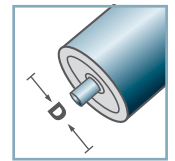
KF-50					
Type	D1	D2	L	D3	D4
KF-50 I-a	53,4	59,7	92,5	-	-
KF-50 II	60,0	66,5	100,0	-	-
KF-50 III	66,5	73,0	99,0	-	-
KF-50 IV	73,5	80,0	100,0	50,6	75,5
KF-50 V	80,0	86,5	95,5	50,7	81,7
KF-50 VI	86,5	93,5	100,0	50,6	87,7
KF-50 VII	93,5	100,0	100,0	50,6	94,3
KF-50 VIII	100,0	106,5	95,5	-	-
KF-50 IX	106,5	113,0	95,5	-	-
KF-50 X	113,0	119,5	95,5	-	-

**Other dimensions on request!**

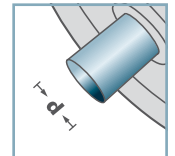
- ☛ Conic Roller: Plastic
- ☛ Endcap: Plastic



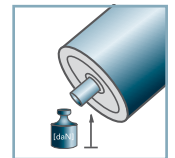
**KF-50**



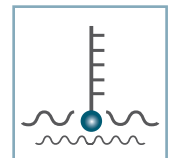
**D** [mm]  
50



**d** [mm]  
-



**C** [daN]  
-



**T** [°C]  
0° - 80°



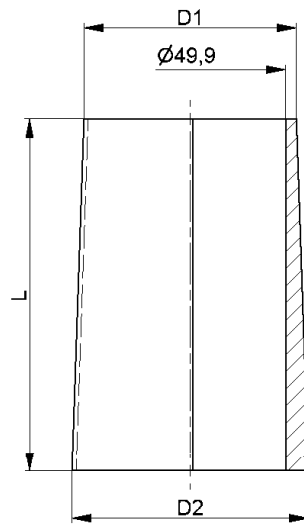
-



**Carton** [pcs.]



# Taper Sleeves



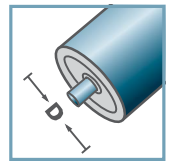
KF-50			
Type	D1	D2	L
KF-50 I Type B	54,0	59,9	90,0
KF-50 II Type B	59,9	66,6	100,0
KF-50 III Type B	66,6	73,4	100,0
KF-50 IV Type B	73,4	80,1	100,0
KF-50 V Type B	80,1	86,9	100,0
KF-50 VI Type B	86,9	93,6	100,0
KF-50 VII Type B	93,6	100,4	100,0
KF-50 VIII Type B	100,4	107,1	100,0
KF-50 IX Type B	107,1	113,9	100,0
KF-50 X Type B	113,9	120,9	100,0

Other dimensions on request!

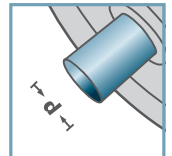
- ☛ Conic Roller: Plastic
- ☛ Endcap: not necessary



KF-50



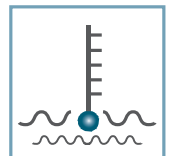
D [mm]  
50



d [mm]  
-



C [daN]  
-



T [°C]  
0° - 80°



-



Carton [pcs.]

# Taper Sleeves