

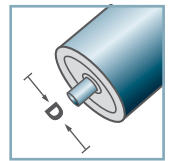
<b>MTR-16</b>			
<b>Type</b>	<b>Di ±0.1</b>	<b>Da ±0.2</b>	<b>Load Rating C [daN]</b>
MTR-30x1,2.16	27,6	29,6	30
MTR-30x1,5.16	27,3	29,6	30

**Other dimensions on request!**

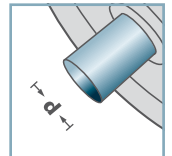
- ☛ Housing: Steel, Zinc plated
- ☛ Bearing RL-16
  - ☛ Bearing Shell: Steel, Hardened
  - ☛ Inner Race: Steel, Hardened, Zinc plated
  - ☛ Ball Cage: Plastic
  - ☛ Ball: Steel



**MTR-16**



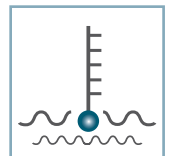
**D [mm]**  
30



**d [mm]**  
8; 10



**C [daN]**  
30



**T [°C]**  
0° - 100°



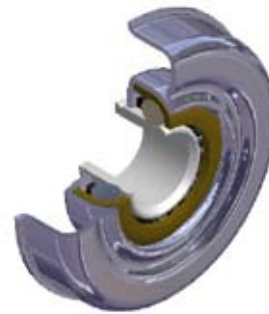
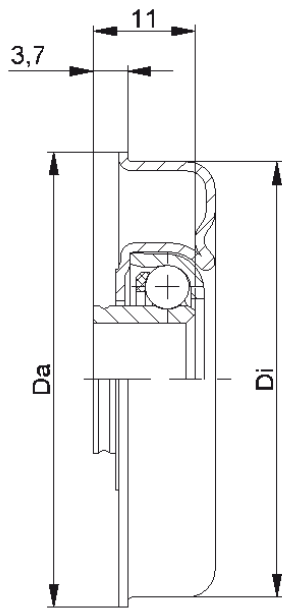
Vactra No. 2



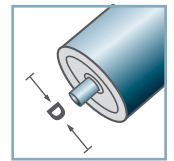
**Carton [pcs.]**

500

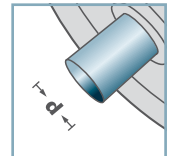
**MTR**



## MTR-20



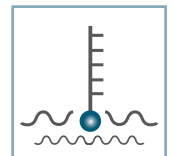
**D** [mm]  
40 - 80



**d** [mm]  
8; 10; 12; SW11



**C** [daN]  
80



**T** [°C]  
0° - 100°



Vactra No. 2

MTR-20			
Type	Di ±0.1	Da ±0.2	Load Rating C [daN]
MTR-40x1,5.20	37,3	39,5	80
MTR-40x2,0.20	36,3	39,5	80
MTR-48x1,5.20	45,3	47,5	80
MTR-50x1,5.20	47,3	49,5	80
MTR-50x2,0.20	46,3	49,5	80
MTR-60x1,5.20	57,3	59,5	80
MTR-60x2,0.20	56,3	59,5	80
MTR-80x2,0.20	76,4	79,5	80

### Other dimensions on request!

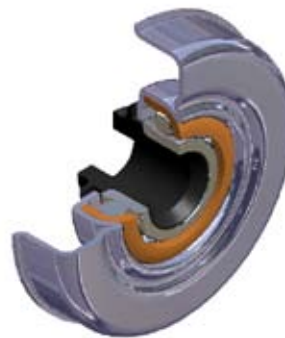
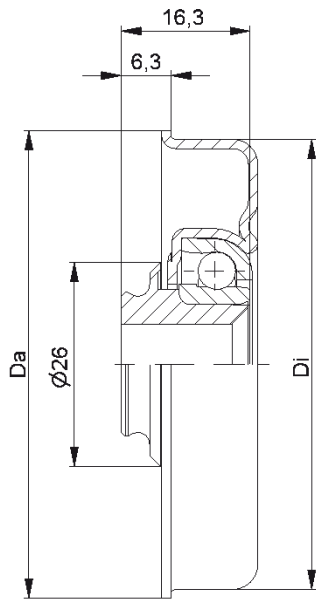
- ☛ Housing: Steel, Zinc plated
- ☛ Bearing RL-20
  - ☛ Bearing Shell: Steel, Hardened
  - ☛ Inner Race: Steel, Hardened, Zinc plated
  - ☛ Ball Cage: Plastic
  - ☛ Ball: Steel



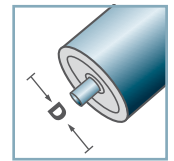
**Carton** [pcs.]

ø40: 250  
ø48: 350  
ø50: 350  
ø60: 200  
ø80: 125

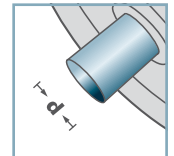
# MTR



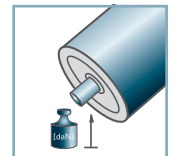
**MTR-30**



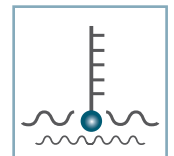
**D** [mm]  
50 - 80



**d** [mm]  
8; 10; 12; SW11



**C** [daN]  
120



**T** [°C]  
0° - 100°



EP 0



**Carton** [pcs.]

ø50: 300  
ø60: 200  
ø80: 125

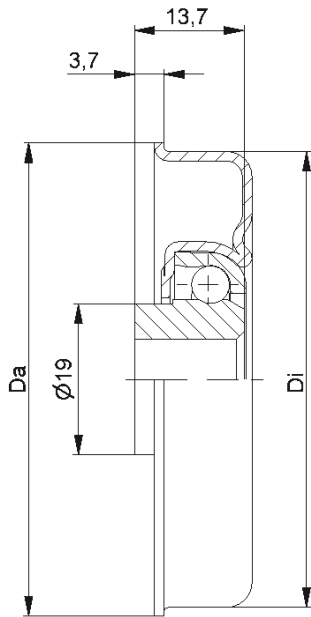
<b>MTR-30</b>			
Type	Di ±0.1	Da ±0.2	Load Rating C [daN]
MTR-50x1,5.30	47,3	49,5	120
MTR-50x2,0.30	46,3	49,5	120
MTR-50x3,0.30	44,3	49,5	120
MTR-60x1,5.30	57,3	59,5	120
MTR-60x2,0.30	56,3	59,5	120
MTR-80x2,0.30	76,4	79,5	120

**Other dimensions on request!**

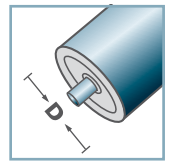
- ☛ Housing: Steel, Zinc plated
- ☛ Reducing Bush: Plastic
- ☛ Bearing RL-30
  - ☛ Bearing Shell: Steel, Hardened
  - ☛ Inner Race: Steel, Hardened
  - ☛ Ball: Steel



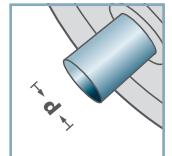
**MTR**



## MTR-30-2



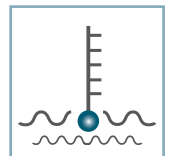
**D** [mm]  
50 - 80



**d** [mm]  
12; 14; 15; SW11



**C** [daN]  
120



**T** [°C]  
0° - 100°



EP 0



**Carton** [pcs.]

ø50: 300  
ø60: 200  
ø80: 125

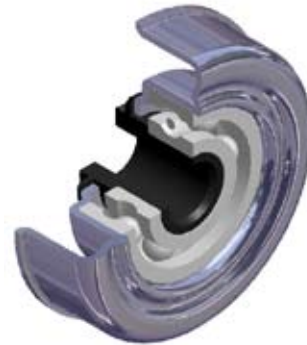
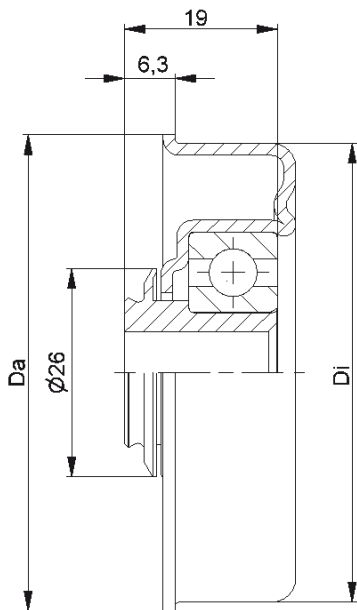
MTR-30-2			
Type	Di ±0.1	Da ±0.2	Load Rating C [daN]
MTR-50x1,5.30-2	47,3	49,5	120
MTR-50x2,0.30-2	46,3	49,5	120
MTR-60x1,5.30-2	57,3	59,5	120
MTR-60x2,0.30-2	56,3	59,5	120
MTR-80x2,0.30-2	76,4	79,5	120

### Other dimensions on request!

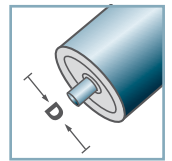
- ☛ Housing: Steel, Zinc plated
- ☛ Bearing RL-30-2
  - ☛ Bearing Shell: Steel, Hardened
  - ☛ Inner Race: Steel, Hardened
  - ☛ Ball: Steel



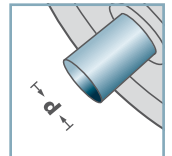
# MTR



## MTR-40



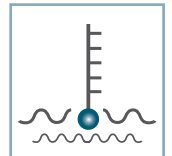
**D** [mm]  
50 - 80



**d** [mm]  
10; 12; SW11



**C** [daN]  
120 - 150



**T** [°C]  
0° - 80°



EP 2



**Carton** [pcs.]

ø50: 100  
ø60: 200  
ø80: 125

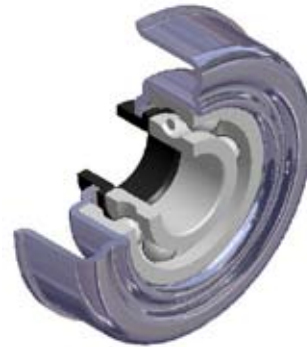
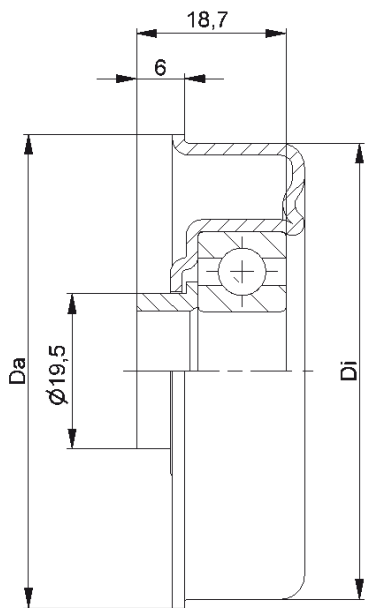
MTR-40			
Type	Di ±0.1	Da ±0.2	Load Rating C [daN]
MTR-50x1,5.40	47,3	49,5	120
MTR-50x2,0.40	46,3	49,5	120
MTR-60x1,5.40	57,3	59,5	150
MTR-60x2,0.40	56,3	59,5	150
MTR-60x3,0.40	54,3	59,5	150
MTR-80x2,0.40	76,5	79,5	150

**Other dimensions on request!**

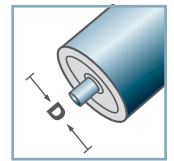
- ☛ Housing: Steel, Zinc plated
- ☛ Reducing Bush: Plastic
- ☛ Bearing 6202



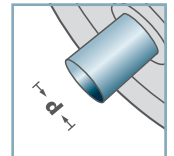
# MTR



## MTR-40.15



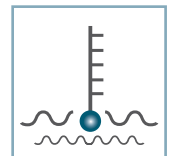
**D** [mm]  
50 - 80



**d** [mm]  
15



**C** [daN]  
120 - 150



**T** [°C]  
0° - 80°



EP 2



**Carton** [pcs.]

ø50: 100  
ø60: 200  
ø70: 125  
ø80: 125

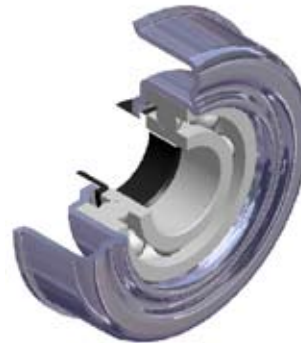
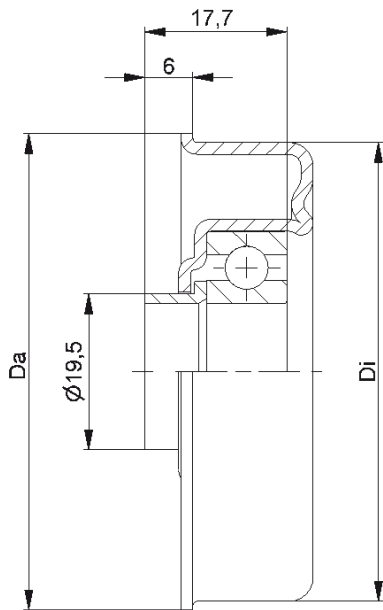
MTR-40.15			
Type	Di ±0.1	Da ±0.2	Load Rating C [daN]
MTR-50x1,5.40.15	47,3	49,5	120
MTR-50x2,0.40.15	46,3	49,5	120
MTR-60x1,5.40.15	57,3	59,5	150
MTR-60x2,0.40.15	56,3	59,5	150
MTR-60x3,0.40.15	54,3	59,5	150
MTR-70x2,0.40.15	66,4	69,5	150
MTR-80x2,0.40.15	76,5	79,5	150

### Other dimensions on request!

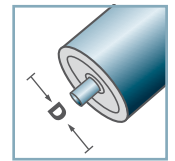
- ☛ Housing: Steel, Zinc plated
- ☛ Distance Bush: Plastic
- ☛ Bearing 6202



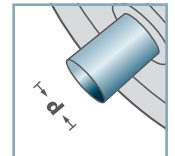
# MTR



**MTR-45.17**



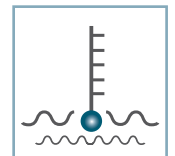
**D [mm]**  
80



**d [mm]**  
17



**C [daN]**  
150



**T [°C]**  
0° - 80°



EP 2



**Carton [pcs.]**

ø50: 100  
ø80: 125

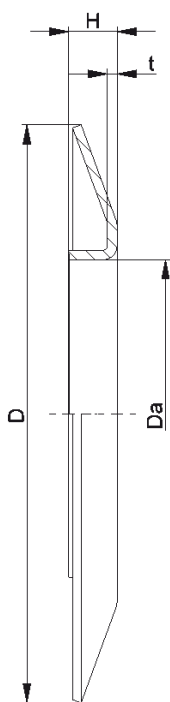
<b>MTR-45.17</b>			
<b>Type</b>	<b>Di ±0.1</b>	<b>Da ±0.2</b>	<b>Load Rating C [daN]</b>
MTR-50x1,5.45.17	47,3	49,5	120
MTR-80x2,0.45.17	76,5	79,5	150

**Other dimensions on request!**

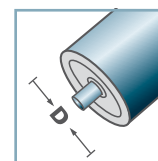
- ☛ Housing: Steel, Zinc plated
- ☛ Distance Bush: Plastic
- ☛ Bearing 6003



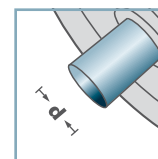
**MTR**



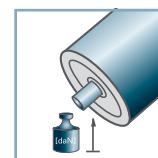
BS-



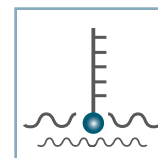
**D** [mm]  
50 - 108



**d** [mm]  
-



**C** [daN]  
-



**T** [°C]  
-



-



**Carton** [pcs.]

25

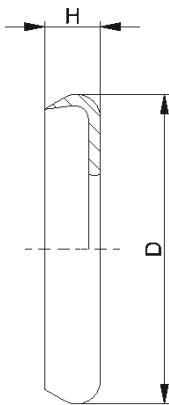
BS-				
Type	Da ±0.1	D -2	H ±0.5	t
BS-50-130	49,9	130	10	1,5
BS-60-130	59,9	130	10	1,5
BS-80-150	79,9	150	14	2,5
BS-89-150	88,9	150	14	2,5
BS-108-150	107,9	150	14	2,5

**Other dimensions on request!**

**Wheel Flange:** Steel







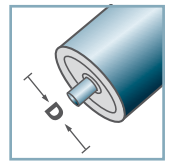
DK-MTR		
Type	D	H
DK-MTR-20	34	7
DK-MTR-30-2	39	7

**Other dimensions on request!**

☛ Seal Bonnet: Plastic

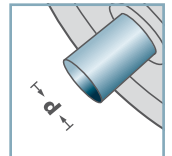


**DK-MTR-**



**D** [mm]

-



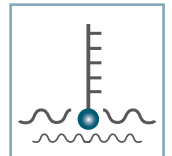
**d** [mm]

-



**C** [daN]

-



**T** [°C]

0° - 80°

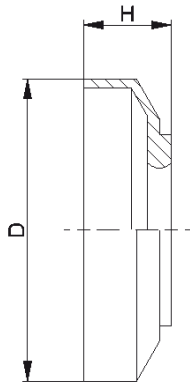


-



**Carton** [pcs.]

\_\_\_\_\_



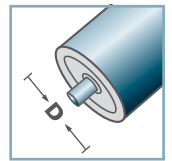
DK-MTR		
Type	D	H
DK-MTR-30	38	11

Other dimensions on request!

Seal Bonnet: Plastic

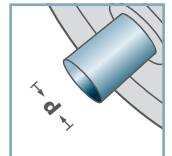


DK-MTR-



D [mm]

-



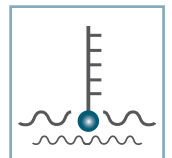
d [mm]

-



C [daN]

-



T [°C]

0° - 80°



-



Carton [pcs.]

\_\_\_\_\_